



Quality Tolerance Limits

More Critical Aspects of the Clinical Trial with Very Less Visibility

Saritha Chamarthi & Mahesh Balagonda

Table of Contents



01 – MEET THE TEAM



02 - DEFINITION



03 – FOCUS AREAS



04 - CONSIDERATIONS

05 –SIGNIFICANCE AND FRAMEWORK

06 – QTLS VERSUS KRIS

07 – STANDARDS & AUTOMATION

08 – QUESTIONS?



Meet the Team



SARITHA CHAMARTHI
*Director, Global Clinical
Programming & Analytics*



Saritha.Chamarthi@Fortrea.com



MAHESH BALAGONDA
*Manager, Global Clinical
Programming & Analytics*



Mahesh.Balagonda@Fortrea.com

Definition

QTL

A value/threshold associated with trial parameter

Critical to quality

Impact participants safety

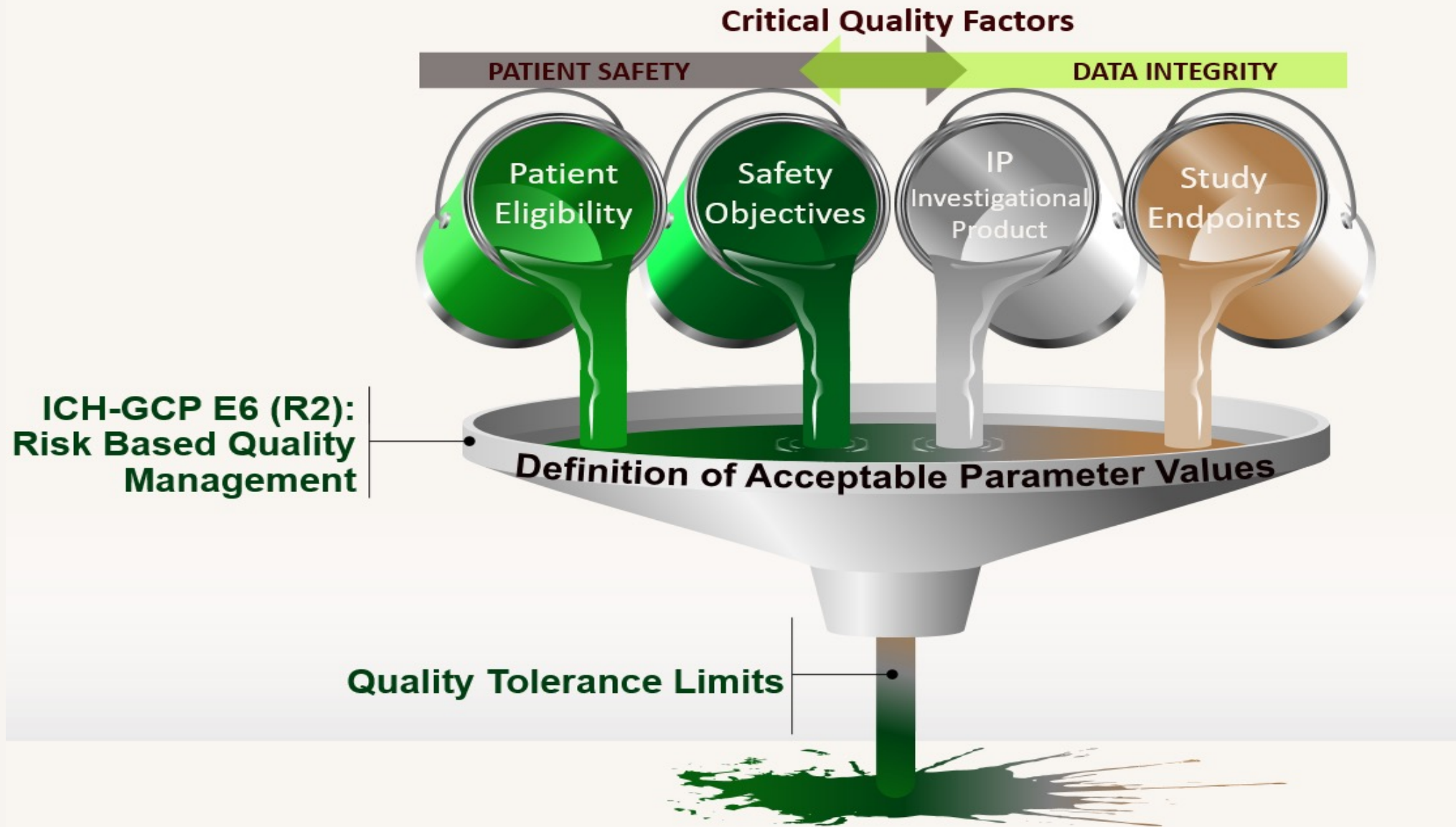
Reliability of trial results

Early identification of any risks

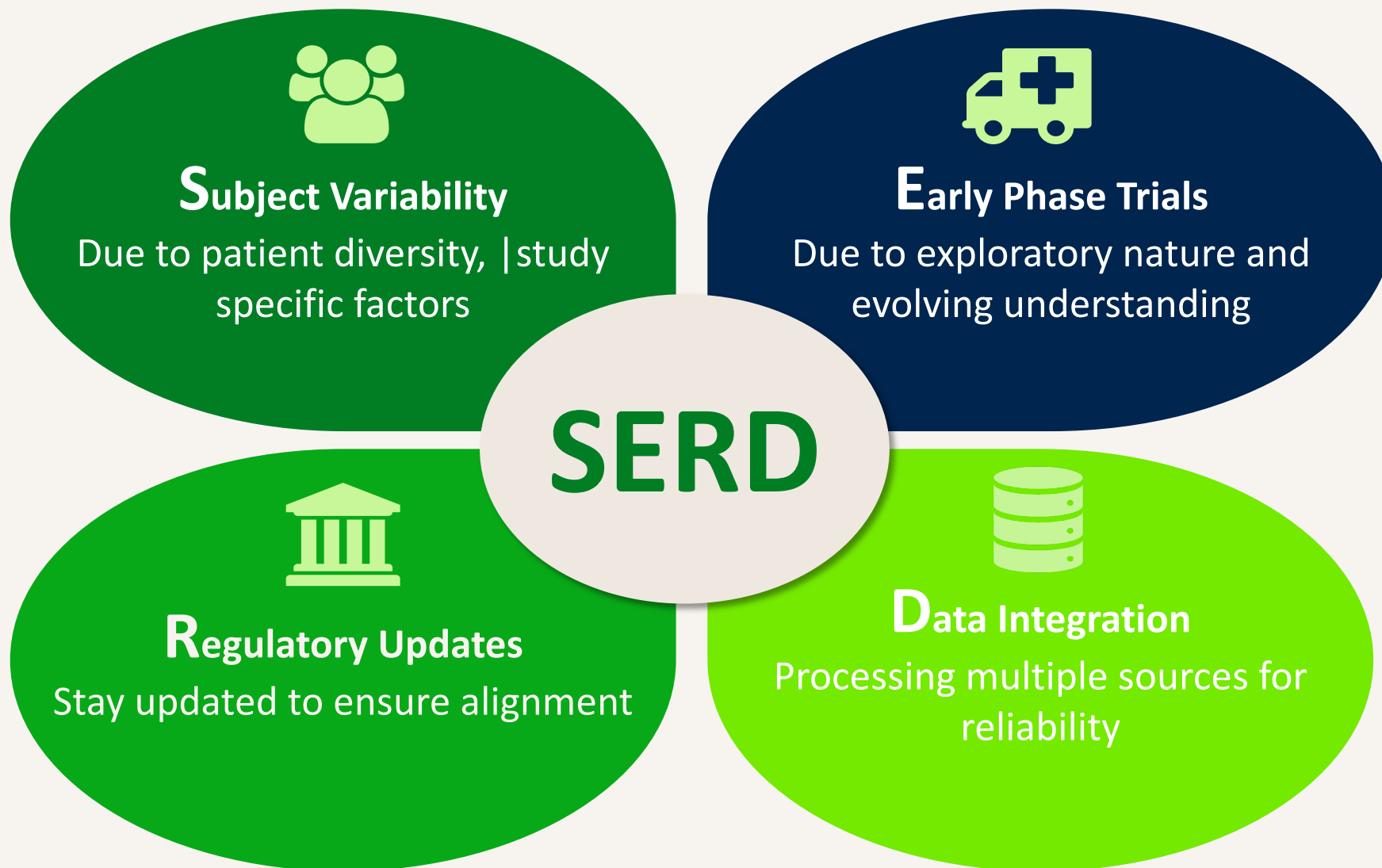
Part of Risk Based Quality Management

Specifically mentioned in ICH-GCP E6 (R2)

Focus areas



Considerations to define QTLs



QTL's Significance

Protecting Patient Safety

- Any conclusions from the trial are based on reliable information, minimizes potential risks.

Ensuring Data Integrity

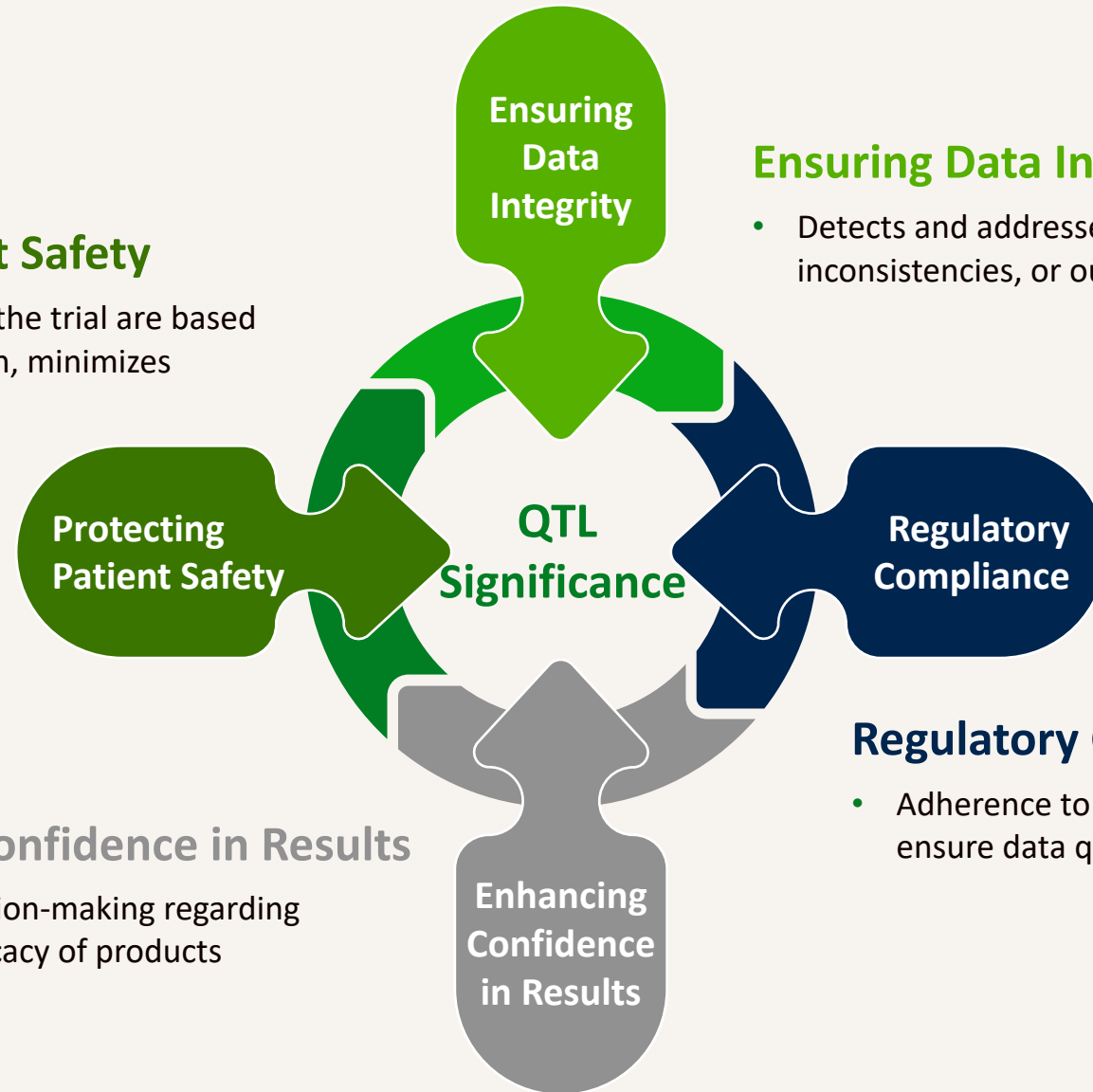
- Detects and addresses data errors, inconsistencies, or outliers

Regulatory Compliance

- Adherence to regulatory authorities to ensure data quality and validity

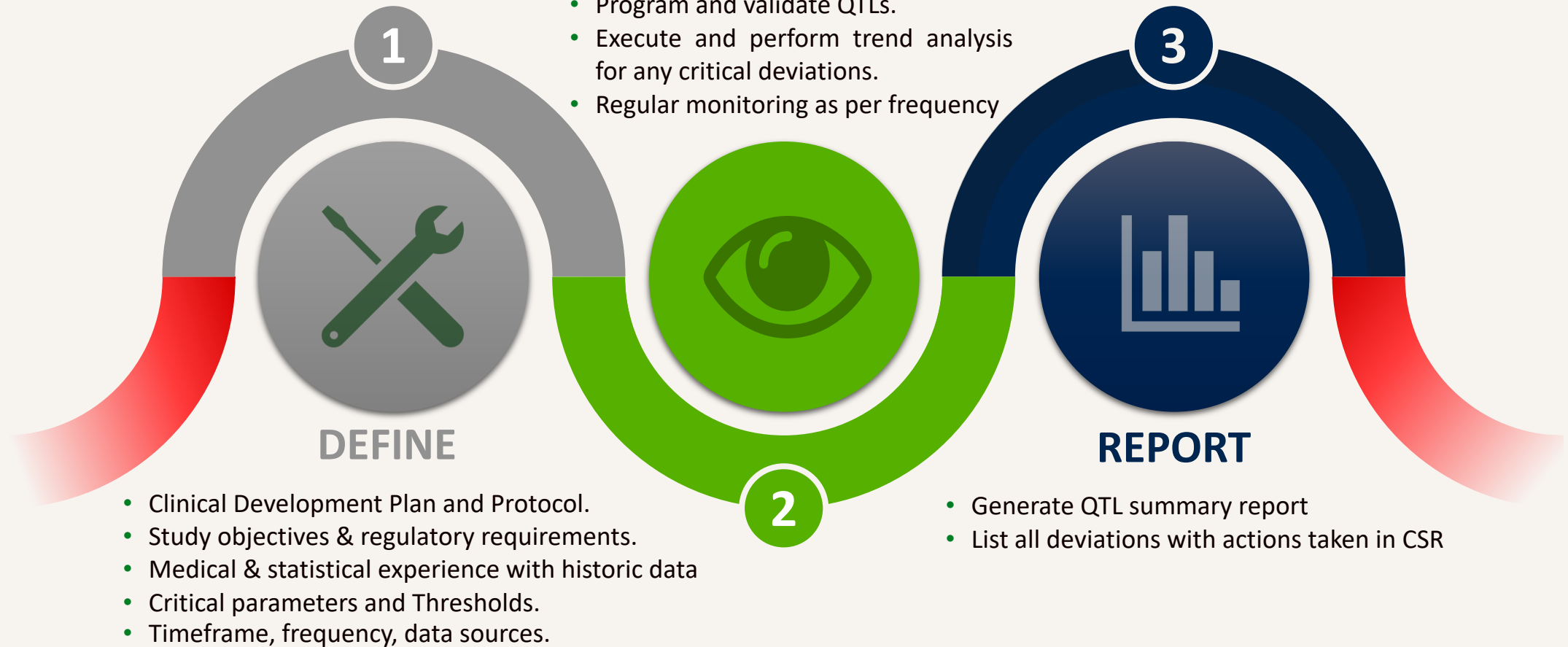
Enhancing Confidence in Results

- Supports decision-making regarding safety and efficacy of products



Framework to Implement QTLs

MONITOR



QTLs vs KRIs

QTLs

- Quality Tolerance Limit
- Process driven
- Higher-level indication of quality
- Traced at study level
- ~ 3 to 5 per study
- **Report** important deviations in CSR

KRIs

- Key Risk Indicator
- Risk driven
- Monitored during study progression
- Traced at site & country level
- ~ 15 to 20 per study
- **Monitor** quality performance during study progression

Standards & Automation Scripts

Benefits

- Minimum study specific effort
- Controlled version tracking
- Automated executions/runs
- Less turn arounds with less resources

Methodology

- Adaption of scripts to handle study specific thresholds
- Automated scheduled jobs for maintenance



Standard QTLs

- Identified most used QTLs across TAs
- Library implementation



Thank You!!

Saritha.Chamarthi@Fortrea.com

Mahesh.Balagonda@Fortrea.com