



# PHUSE Working Groups

## Welcome Pack

### Welcome to PHUSE

Thank you for contributing to one of our many active Projects within the PHUSE Working Groups. In this welcome pack, you'll find information on processes, together with guidelines and expectations for Projects and members alike.

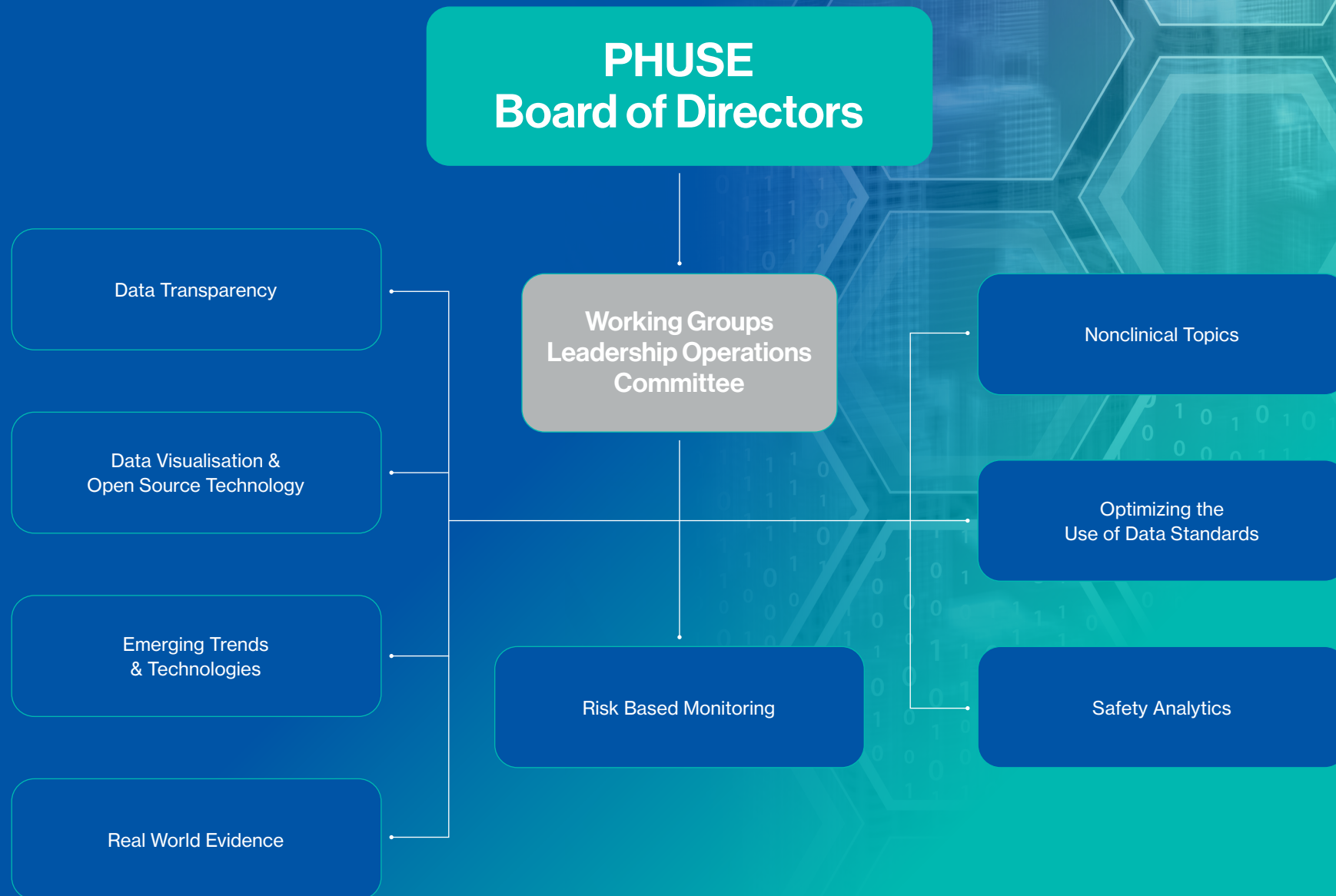
In addition, there are links to the tools and social platforms PHUSE use, which are readily available to you.

Finally, we're here to help, so if you have any questions, please feel free to contact us at [workinggroups@phuse.global](mailto:workinggroups@phuse.global).

**On behalf of PHUSE,  
thank you for your dedication  
and commitment. We look  
forward to working with you.**



# PHUSE Working Groups Structure



# How to Get Involved?

We encourage all Working Group members to get involved in the three regular webinars, whether that be presenting, attending, asking questions. Click on each of the boxes to learn more

## PHUSE Community Forum

The PHUSE Community Forum creates a space to unite and discuss industry topics in an informal setting. Alongside this, each Working Group will use Disqus to host offline discussions and continue sharing information.

## PHUSE Webinar Wednesdays

Webinar Wednesday provides the PHUSE Community with a high-level monthly update from the PHUSE Board, Committee and Working Groups members. This covers all areas of PHUSE ranging from events, deliverables and key activities to industry hot topics.

## How to Get Involved?

## PHUSE Expert Answers to Community Questions

Expert Answers to Community Questions enables the PHUSE Community to ask their questions on a particular topic to experts in the field. Hear from a panel of Subject Matter Experts (SMEs) from PHUSE, CDISC and the FDA, who will discuss their own experiences and address questions from the audience in a truly interactive way.

## Participate in an Active Project

Join as a project member, attend regular meetings and contribute to the projects end objective.

## Annual CSS

Attend the annual Computational Science Symposium (CSS). The CSS is a collaborative event with the FDA hosting Working Groups breakouts and plenary sessions.



# Information Hub

## PHUSE Advance Hub

The central platform collating all key activities within the Working Groups such as project scope, volunteer opportunities, deliverables and timelines. The Advance Hub also includes dedicated sections for each of the Working Groups including all the projects, the Working Groups leads contact information and the latest activities.

### Useful Information

Working Groups templates and processes.

### Regulatory Deliverables

View all current regulatory deliverables.

### Working Group Reports

Detailed overview of the projects progress in the past quarter.

### Workings Groups Archive

Archived materials from each of the Working Groups.

### Current Initiatives

Including Community Forum and Expert Answers to Community Questions.

### Hot Topics

Deliverables under review.

## PHUSE Website

Highlights all key activities within the wider PHUSE Community

### PHUSE Archive

Access PHUSE materials from all events, webinars and publications.

### Volunteer With PHUSE

Opportunities for you to participate in PHUSE activities.

### Job Vacancies

Explore our industry job vacancies for your next position.

### Events Calendar

Here you will find information on all our events across the year.  
  
Working Group events can be found on the Advance Hub

### Deliverables

Search and filter the Workings Groups deliverables.

# Working Group Deliverables

Each of the Working Groups projects will produce a final deliverable ranging from white papers, references and regulatory referenced documents. All deliverables are available on the PHUSE website where you can filter searches by Working Groups, year or deliverable type.

## Deliverable Review Process

The below outlines the deliverable review process, including Working Groups Leadership Operations Committee and public review to finalisation.

Internal Working Group Lead Review

Working Groups Leadership  
Operations Committee Review (2 weeks)

PHUSE Public Review\*  
(4 weeks)

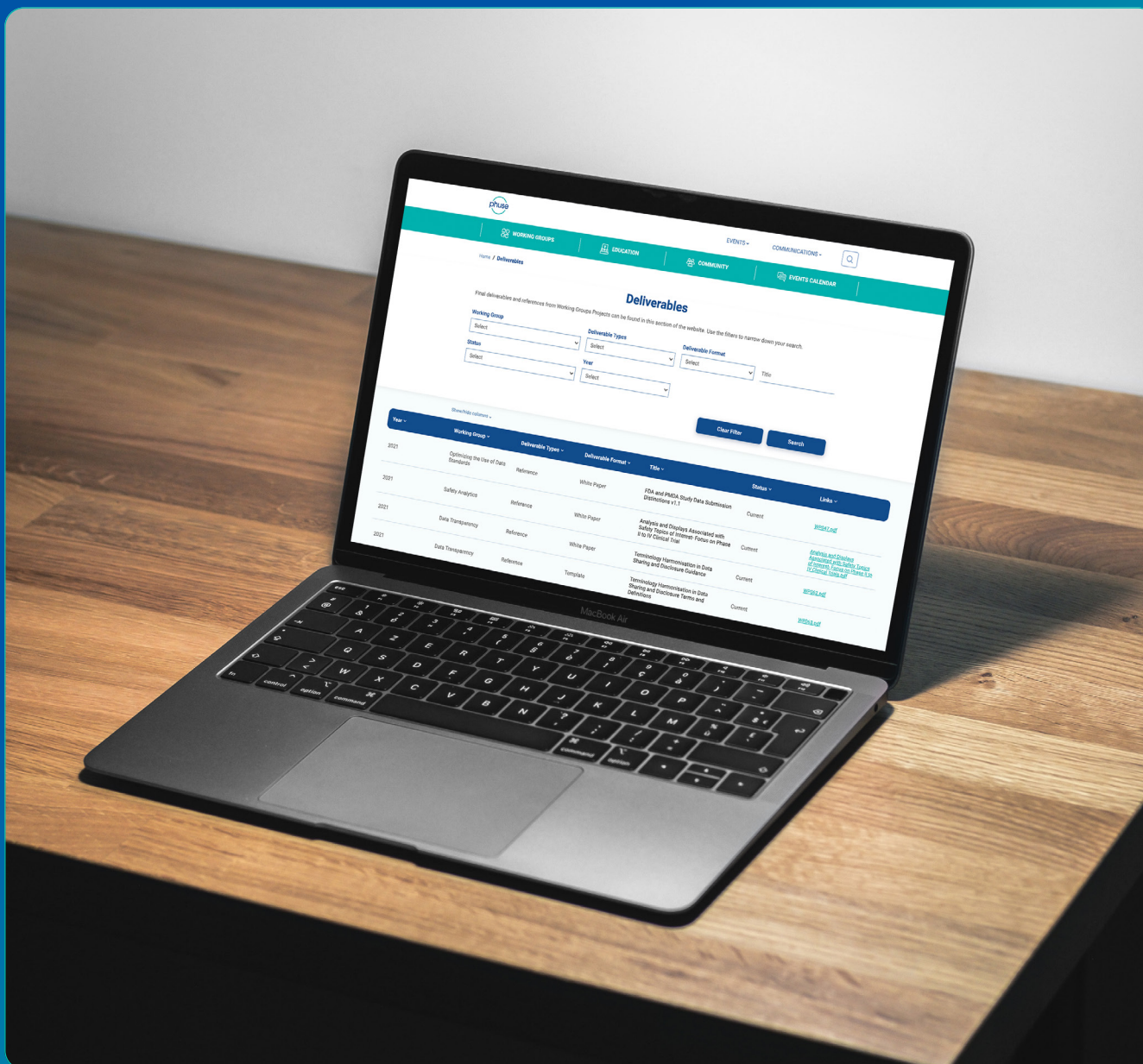
Feedback Shared with Authors

Finalisation of Deliverable  
(Incorporating Feedback)

Final Deliverable Sent to  
PHUSE Proofreader and Designer

PHUSE Website and Shared with  
the Wider PHUSE Community

\*Following Working Groups Leadership Operations Committee





# Further Information

## Online Platforms

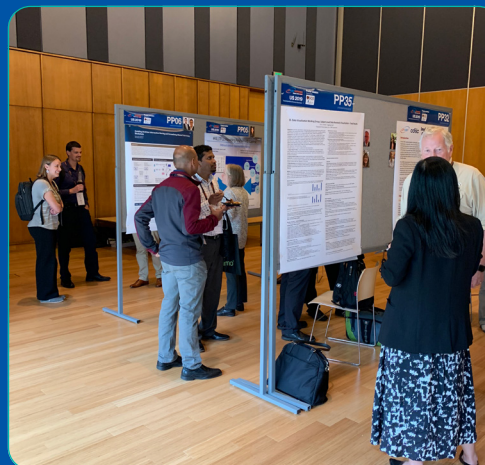
- Website: [www.phuse.global](http://www.phuse.global)
- Advance Hub: [advance.phuse.global/display/WEL/Welcome+to+PHUSE+Advance+Hub](http://advance.phuse.global/display/WEL/Welcome+to+PHUSE+Advance+Hub)
- PHUSETube: [www.youtube.com/user/PHUSETube](http://www.youtube.com/user/PHUSETube)
- Facebook: [en-gb.facebook.com/phusebook/](https://en-gb.facebook.com/phusebook/)
- Twitter: [twitter.com/PHUSETwitta](https://twitter.com/PHUSETwitta)
- LinkedIn: [www.linkedin.com/company/phuse/](http://www.linkedin.com/company/phuse/)
- Blogs: [phuse.global/Communications/PHUSE\\_Blog/1](http://phuse.global/Communications/PHUSE_Blog/1)
- Job Vacancies: [phuse.global/Jobs\\_Vacancies/1](http://phuse.global/Jobs_Vacancies/1)

## Collaborations

To fulfil our mission to share – connect – advance, PHUSE has successfully built relationships with regulatory agencies, standards organisations and industry groups. We value these relationships and partnerships. Our collaborations have been strengthened through our events and Working Groups. See a list of current collaborators [here](#).

## Vendor Neutrality

Vendor neutrality is a business and design approach that seeks to ensure broad compatibility and interchangeability of products and technologies. The model encompasses standardisation, non-proprietary design principles and unbiased business practices at PHUSE. We will not favour one software, standard or programming language to the detriment of others, and we will always look to provide an impartial platform for all ideas to be shared, discussed and documented openly, transparently and factually.



Working Groups Activity at the PHUSE/FDA Computational Science Symposium